



Steel Conduits  
Conduit Fittings  
Flexible Conduits

**völtec**x

## 1. INTRODUCTION

VOLTECX products introduction and selecting VOLTECX

## 2. STEEL CONDUITS

VOLTECX BS4568: Part 1: 1970 (Class 4) Conduit IEC 61386-21:2004; IEC 60614-2-1:1993; BSEN50086-2-1:1996

VOLTECX BS4568: Part 1: 1970 (Class 3) Conduit IEC 61386-21:2004

VOLTECX BS31: 1940 (Class 3) Conduit

## 3. CIRCULAR JUNCTION BOXES

1 Way/ Terminal Box

2 Way/ Angle Box

3 Way/ Tee box

Extension Ring

1 Way/ Terminal Box with Backhole

2 Way/ Through box

4 Way/ Intersection/ Cross Box

## 4. CONDUIT ACCESSORIES

Circular Box Cover/Lid

Half Saddle

Screwless Coupler/ Socket Joint

Heavy Duty Distance Saddle

Reducer

Spacer Bar Saddle

Coupling/ Socket

Dome Cover/ Lid

Short Nipple

## 5. CONDUIT ACCESSORIES

Brass Male Bush – Short

Brass Female Bush

Flange Coupling

Ball and Socket

Brass Male Bush – Long

Hex Lock Nut

Stop Plug

Lock Ring

## 6. SWITCH AND SOCKET BOXES (K.O. BOXES)

1 Gang Knock Out (K.O)/ Switch and Socket Box

2 Gang Knock Out (K.O)/ Switch and Socket Box

1 Gang Knock Out (K.O)/ Switch and Socket Box – “with Fish Tail”

2 Gang Knock Out (K.O)/ Switch and Socket Box – “with Fish Tail”

## 7. FLEXIBLE CONDUIT SYSTEM

PVC Coated Flexible Conduit

Low Smoke (LSOH) Coated Flexible Conduit

Nickel Plated Adaptor

G.I. Steel Flexible Conduit

Brass Adaptor C/W Locknut

Liquid Tight Adaptor

## 8. SUPPORT CHANNEL SYSTEM

41 x 41 C-Channel

41 x 41 C-Channel - Slotted

Spring Nut

C-Bracket

Washers

Angle Irons

Roofing-Bolt-Nuts

41 x 21 C-Channel

41 x 21 C-Channel – Slotted

Threaded Rod

Threaded Rod Coupler

Hex Nuts & Bolts

Drop-In Anchor

## 9. CABLE SUPPORT SYSTEM

Metal Cable Trunkings

Metal Cable Trays

Metal Cable Ladders

VOLTECX® is a renowned Singapore based brand, specializing in supplying of high quality conduits and conduit fittings, backed by strong and responsive customer service team and highly expertize and motivated production team whose sole purpose is on customer satisfaction.

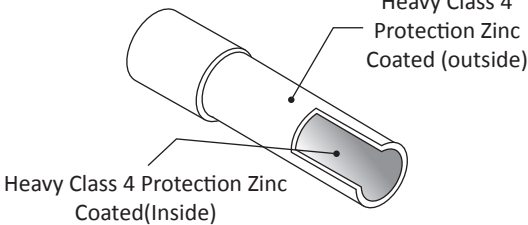
VOLTECX® conduits range are manufactured using the highest steel grade, ensuring strong mechanical strength and to the highest quality accordance to the relevant British and International standards.

A strict set of quality assurance and procedures are enforced from raw material selection to production to packing and shipping of the end products, helps ensure clients gets the highest quality product and helps us propel our conduit systems to international fame.

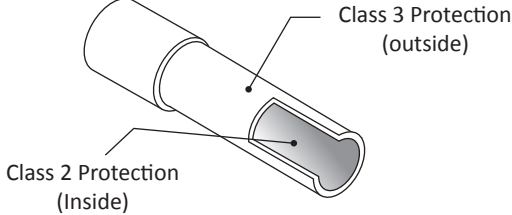
### **Why choose VOLTECX®?**

- High quality mild steel , continuously welded to ensure smooth internal surface to ensure easy wire pulling, and superior bending and forming properties.
- Threading complied with BS Specifications.
- Conduits are packed in small individual wrapped for easier handling and are supplied with one socket and a plastic capping on the other end to protect thread from damage.
- Full range of British and European standard of BS4568, IEC 61386, IEC 60614, BSEN 50086 steel conduits and conduit fittings and accessories.
- Steel flexible conduits to BS731 standards
- K.O Boxes (Switch and socket boxes) to BS4662 standard.
- Various colored Epoxy powder coated finishing available upon request.
- Service-Oriented and responsive.
- Proper storage of finished products to ensure customers gets the freshest conduits and conduit fittings each time.
- Large and consistent stockpile available for a fast dispatch of ready goods.

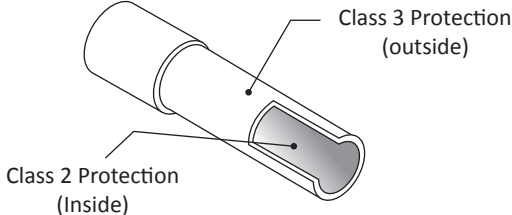
## VOLTECX Rigid BS4568: Part 1: 1970 (Class 4) Conduit IEC 61386-21:2004; IEC 60614-2-1:1993; BSEN50086-2-1:1996

<ul style="list-style-type: none"> <li>• Heavy protection on the interior and exterior of conduit surface.</li> <li>• Hot-Dipped Galvanized to BS EN ISO 1461 (Class 4)</li> <li>• Supplied with one coupler and threaded at both ends.</li> <li>• Heavy Gauge Metric size threaded</li> <li>• Suitable for outdoor installation and places where there's high level of corrosion, chemical plants, and in areas of high humidity</li> </ul>				 <p>Heavy Class 4 Protection Zinc Coated (outside)</p> <p>Heavy Class 4 Protection Zinc Coated (Inside)</p>		
Nominal size	Outside Diameter		Nominal Wall Thickness	Length of Threads		Weight per Length
	Min	Max		Min	Max	
20mm	19.7mm	20.0mm	1.6+- 0.15mm	13.0	15.0	+2.9kg
25mm	24.6mm	25.0mm	1.6+- 0.15mm	16.0	18.0	+3.8kg
32mm	31.6mm	32.0mm	1.6+- 0.15mm	18.0	20.0	+5.5kg
Note: Standard length 3.75mtr (w/o coupler) : Colored, epoxy powder coated conduits supplied upon request						

## VOLTECX Rigid BS4568: Part 1: 1970 (Class 3) Conduit IEC 61386-21:2004

<ul style="list-style-type: none"> <li>• Medium protection on the interior and exterior of conduit surface.</li> <li>• Supplied with one coupler and threaded at both ends.</li> <li>• Heavy Gauge Metric size threaded</li> <li>• Suitable for indoor and semi-indoor installation</li> </ul>				 <p>Class 3 Protection (outside)</p> <p>Class 2 Protection (Inside)</p>		
Nominal size	Outside Diameter		Nominal Wall Thickness	Length of Threads		Weight per Length
	Min	Max		Min	Max	
20mm	19.7mm	20.0mm	1.6+- 0.15mm	13.0	15.0	+2.7kg
25mm	24.6mm	25.0mm	1.6+- 0.15mm	16.0	18.0	+3.4kg
32mm	31.6mm	32.0mm	1.6+- 0.15mm	18.0	20.0	+4.5kg
Note: Standard length 3.75mtr (w/o coupler) : Colored, epoxy powder coated conduits supplied upon request						

## VOLTECX Rigid BS31: 1940 (Class 3) Conduit

<ul style="list-style-type: none"> <li>• Medium protection on the interior and exterior of conduit surface.</li> <li>• Supplied with one coupler and threaded at both ends.</li> <li>• Heavy Gauge Imperial size threaded</li> <li>• Suitable for indoor and semi-indoor installation</li> </ul>				 <p>Class 3 Protection (outside)</p> <p>Class 2 Protection (Inside)</p>		
Nominal size	Outside Diameter		Nominal Wall Thickness	Length of Threads		Weight per Length
	Min	Max		Min	Max	
¾"	18.8mm	19.1mm	1.6+- 0.15mm	13.0	15.0	+2.7kg
1"	25.1mm	25.4mm	1.6+- 0.15mm	16.0	18.0	+3.4kg
1 ¼"	31.5mm	31.8mm	1.6+- 0.15mm	18.0	20.0	+4.5kg
Note: Standard length 3.75mm (w/o coupler) : Colored, epoxy powder coated conduits supplied upon request						

<b>Marking:</b>	VOLTECX
<b>Material:</b>	Malleable Iron – BS4568: Pt 2: 1970/ IEC 61386-21-2004
<b>Finishing:</b>	Hot-Dipped Galvanized to BS EN ISO 1461
<b>Fixing Center:</b>	Tapped M4 at 50.8mm center
<b>Sizes:</b>	20mm, 25mm, 32mm



1 Way/ Terminal Box



2 Way/ Through Box

1 Way/ Terminal box with  
Back-Hole

2 Way/ Angle Box



3 Way/ Tee Box



4 Way/ Intersection/ Cross Box



Extension Ring (Height 38mm)

Circular Box Cover/ Lid



<b>Material:</b>	Steel
<b>Finishing:</b>	Plain Galvanized or Hot-Dipped Galvanized
<b>Sizes:</b>	Small for 20mm and 25mm, and large for 32mm

Spacer Bar Saddle



<b>Material:</b>	Steel
<b>Finishing:</b>	Plain Galvanized or Hot-Dipped Galvanized
<b>Sizes:</b>	20mm, 25mm, 32mm

Half Saddle



<b>Material:</b>	Steel
<b>Finishing:</b>	Plain Galvanized
<b>Sizes:</b>	20mm, 25mm, 32mm

Coupling/ Socket



<b>Material:</b>	Steel
<b>Finishing:</b>	Plain Galvanized or Hot-Dipped Galvanized
<b>Sizes:</b>	20mm, 25mm, 32mm

Socket Joint/Screwless Coupler



<b>Material:</b>	Steel
<b>Finishing:</b>	Plain Galvanized
<b>Sizes:</b>	20mm, 25mm, 32mm

Dome Cover/ Lid



<b>Material:</b>	Malleable Iron
<b>Finishing:</b>	Plain Galvanized or Hot-Dipped Galvanized
<b>Sizes:</b>	20mm, 25mm, 32mm

Heavy Duty Distance Saddle



<b>Material:</b>	Malleable Iron-Base
<b>Finishing:</b>	Hot-Dipped Galvanized
<b>Sizes:</b>	20mm, 25mm, 32mm

Short Nipple



<b>Material:</b>	Steel
<b>Finishing:</b>	Plain Galvanized
<b>Sizes:</b>	20mm, 25mm, 32mm

Reducer



<b>Material:</b>	Brass/ Alloy
<b>Finishing:</b>	Plain Galvanized
<b>Sizes:</b>	25mm x 20mm, 32mm x 25mm

Brass Male Bush- Short



<b>Material:</b>	Brass
<b>Finishing:</b>	-
<b>Sizes:</b>	20mm, 25mm, 32mm

Brass Male Bush- Long



<b>Material:</b>	Brass
<b>Finishing:</b>	-
<b>Sizes:</b>	20mm, 25mm, 32mm

Female Bush



<b>Material:</b>	Brass
<b>Finishing:</b>	-
<b>Sizes:</b>	20mm, 25mm, 32mm

Hex Locknut



<b>Material:</b>	Alloy/ Brass
<b>Finishing:</b>	Plain Galvanized
<b>Sizes:</b>	20mm, 25mm, 32mm

Flange Coupling



<b>Material:</b>	Steel
<b>Finishing:</b>	Plain Galvanized
<b>Sizes:</b>	20mm, 25mm, 32mm

Stop Plug



<b>Material:</b>	Alloy/ Brass
<b>Finishing:</b>	Plain Galvanized
<b>Sizes:</b>	20mm, 25mm, 32mm

Ball and Socket



<b>Material:</b>	Steel
<b>Finishing:</b>	Galvanized
<b>Sizes:</b>	20mm, 25mm

Lock Ring



<b>Material:</b>	Alloy/ Brass
<b>Finishing:</b>	Plain Galvanized
<b>Sizes:</b>	20mm, 25mm, 32mm



## VOLTECX SWITCH AND SOCKET BOXES (K.O. BOXES)

**voltec**x

### 1 Gang Knock-Out (K.O)/ Switch and Socket Box



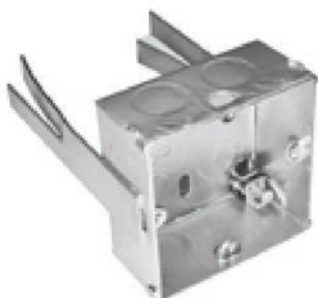
<b>Material:</b>	Steel
<b>Finishing:</b>	Plain Galvanized
<b>Standard:</b>	BS4662 (thickness 1.1mm-1.2mm) Normal (thickness 0.8mm)
<b>Sizes:</b>	75mm (width) x 75mm (Length) x 35mm (Height)
<b>Features:</b>	Available mixed 20mm and 25mm K.O Holes 1 adjustable lug 1 earth terminal

### 2 Gang Knock-Out (K.O)/ Switch and Socket Box



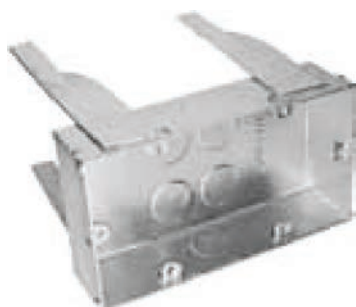
<b>Material:</b>	Steel
<b>Finishing:</b>	Plain Galvanized
<b>Standard:</b>	BS4662 (thickness 1.1mm-1.2mm) Normal (thickness 0.8mm)
<b>Sizes:</b>	135mm (width) x 75mm (Length) x 35mm (Height)
<b>Features:</b>	Available mixed 20mm and 25mm K.O Holes 1 adjustable lug 1 earth terminal

### 1 Gang Knock-Out (K.O)/ Switch and Socket Box – “ With Fish Tail”



<b>Material:</b>	Steel
<b>Finishing:</b>	Hot-Dipped Galvanized
<b>Standard:</b>	BS4662 (thickness 1.1mm-1.2mm) Normal pattern welded fish tail
<b>Sizes:</b>	75mm (width) x 75mm (Length) x 35mm (Height)
<b>Features:</b>	Available mixed 20mm and 25mm K.O Holes 1 earth terminal

### 2 Gang Knock-Out (K.O)/ Switch and Socket Box- “ With Fish Tail”



<b>Material:</b>	Steel
<b>Finishing:</b>	Hot-Dipped Galvanized
<b>Standard:</b>	BS4662 (thickness 1.1mm-1.2mm) Normal pattern welded fish tail
<b>Sizes:</b>	135mm (width) x 75mm (Length) x 35mm (Height)
<b>Features:</b>	Available mixed 20mm and 25mm K.O Holes 1 earth terminal



## PVC Coated Flexible Conduit



<b>Material:</b>	Electro-Galvanized Steel with self-extinguishing black PVC sheathing
<b>Standard:</b>	BS731/ BS EN 50086
<b>IP Rating:</b>	IP 67 (when installed with liquid tight adaptors)
<b>Features:</b>	Highly flexible, provide good protection of cables water-resistant with maximum protection against most liquids and solid particles. High temperature resistance up till 120deg c. Manufactured to withstand vibrations of installations and equipment

## G.I. Steel Flexible Conduit



<b>Material:</b>	Electro-Galvanized Steel
<b>Standard:</b>	BS731
<b>IP Rating:</b>	IP40
<b>Features:</b>	Highly flexible and economical and offers good mechanical protection. Highest temperature resistance of up to 350deg c

## Low Smoke (LSOH) Coated Flexible Conduit



<b>Material:</b>	Electro-Galvanized Steel with heat resistant, low smoke halogen free sheathing
<b>Standard:</b>	IEC 61386/ IEC 61034
<b>IP Rating:</b>	IP 67 (when installed with liquid tight adaptors)
<b>Features:</b>	Resistance to flame, does not emit toxic gases when heated. Ideal for installation in fire-hazard areas

## Liquid Tight Flexible Conduit



<b>Material:</b>	Electro-Galvanized Steel with self-extinguishing black PVC sheathing
<b>Standard:</b>	BS731
<b>IP Rating:</b>	IP 67 (when installed with liquid tight adaptors)
<b>Features:</b>	Resistance to oil, seawater and tough acids. Ideal for installation in chemical plants

## Brass Adaptor C/W Locknut



<b>Material:</b>	Alloy
<b>Finishing:</b>	Brass
<b>Sizes:</b>	20mm x 16mm, 20mm x 20mm, 20mm x 5/8", 25mm x 20mm, 25mm x 25mm, 32mm x 25mm

## Nickle Plated Adaptor



<b>Material:</b>	Alloy
<b>Finishing:</b>	Nickle plated
<b>Sizes:</b>	20mm x 16mm, 20mm x 20mm, 20mm x 5/8", 25mm x 20mm, 25mm x 25mm, 32mm x 25mm

## Liquid Tight Adaptor



<b>Material:</b>	Alloy
<b>Finishing:</b>	Galvanized
<b>Sizes:</b>	20mm x 16mm, 20mm x 20mm, 20mm x 5/8", 25mm x 20mm, 25mm x 25mm, 32mm x 25mm

## Struts C-Channels



<b>Material and Finishing:</b>	Mild Steel with Hot-Dipped Galvanized Finishing (BS EN ISO 1461)/ Stainless Steel to SS304 or SS316
<b>Thickness:</b>	2.0mm/ 2.5mm
<b>Length:</b>	3.0mtr/ 5.8mtr/ 6mtr

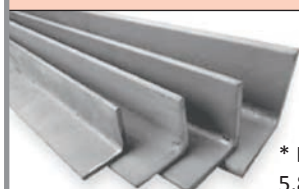
## Threaded Rods



\* Length: 2mtr, others upon request

<b>Material:</b>	Low Carbon Steel
<b>Finishing:</b>	Electro-Galvanized
<b>Sizes:</b>	3/8", 10mm, 12mm, 16mm

## Angle Bars/ Irons



\* Length:  
5.8mtr/ 6mtr

<b>Material:</b>	Mild Steel
<b>Finishing:</b>	Hot-Dipped Galvanized
<b>Sizes:</b>	25mm x 25mm, 32mm x 32mm, 38mm x 38mm

## C-Brackets



<b>Material:</b>	Mild Steel
<b>Finishing:</b>	Hot-Dipped Galvanized / Electro-Galvanized
<b>Sizes:</b>	3"-5"-4", 4"-6"-6"

## Threaded Rod Coupler



<b>Material:</b>	Low Carbon Steel
<b>Finishing:</b>	Electro-Galvanized
<b>Sizes:</b>	3/8", 10mm, 12mm, 16mm

## Roofing Bolt and Nuts



<b>Material:</b>	Low Carbon Steel
<b>Finishing:</b>	Electro-Galvanized
<b>Sizes:</b>	M6x12, 16,20

## Hex Bolt and Nuts



<b>Material:</b>	Low Carbon Steel
<b>Finishing:</b>	Electro-Galvanized
<b>Sizes:</b>	M8, M10, M12

## Drop-In Anchor



<b>Material:</b>	Low Carbon Steel
<b>Finishing:</b>	Electro-Galvanized
<b>Sizes:</b>	3/8", 10mm, 12mm, 16mm

## Spring Nut



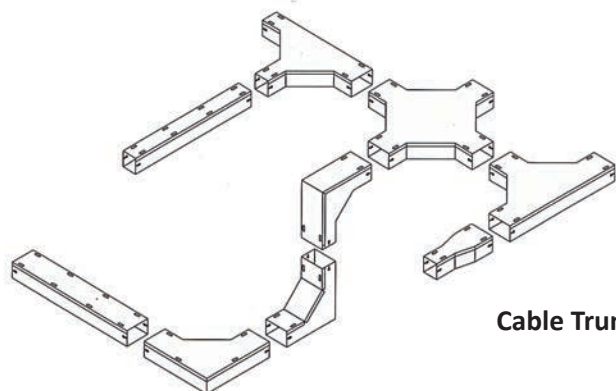
<b>Material:</b>	Low Carbon Steel
<b>Finishing:</b>	Electro-Galvanized
<b>Sizes:</b>	3/8", 10mm, 12mm, 16mm

## Washers

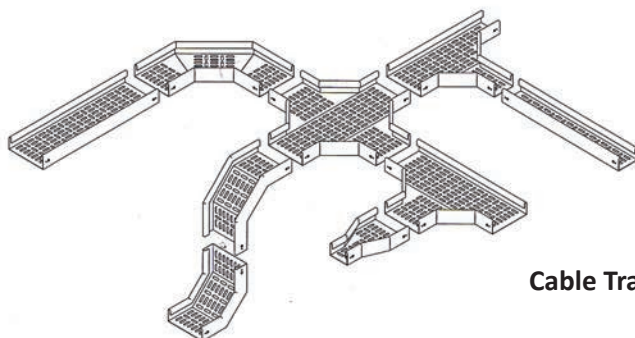


<b>Material:</b>	Low Carbon Steel
<b>Finishing:</b>	Electro-Galvanized
<b>Sizes:</b>	3/8", 10mm, 12mm, 16mm

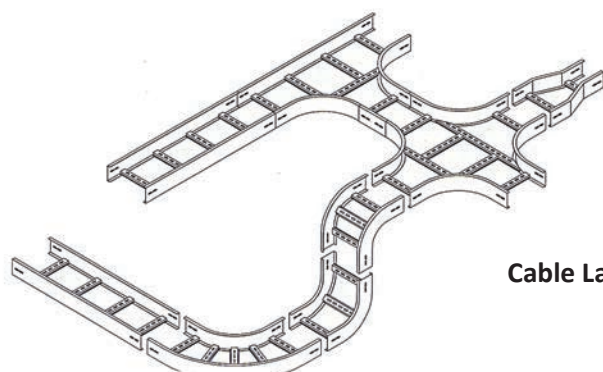
## Metal Cable Trunkings/ Trays/ Ladders



Cable Trunking System



Cable Tray System



Cable Ladder System

## Trunking sizes (mm)

50x25	50x50
75x50	100x50
100x75	100x100
150x50	150x75
150x100	150x150
200x50	200x75
200x100	200x150
250x75	250x100
300x50	300x75
300x100	300x150
400x100	500x100

## Tray sizes (mm)

50	75
100	150
200	300
400	450
500	600
700	750
800	900
1000	1100

## Ladder sizes (mm)

300mm	400mm
450mm	500mm
600mm	700mm
750mm	800mm
900mm	1000mm
1200mm	1400mm

\* Other Sizes available

Materials	Type of Finishing
Electro-Galvanized or eq	Epoxy Powder Coated to a minimum of 50 microns SS249 standard available.
Galvanized iron to JIS G3302 or ASTM A52	Original Finishing
Cold Rolled/ Hot-Rolled Steel to JIS G3141/ 3131	Epoxy Powder Coated or Hot-Dipped Galvanized to BS EN ISO1461: 1999
Electro-Galvanized Zinc coated to JIS G3313 SECC	Epoxy Powder Coated
Stainless Steel to SS304/ SS316	Original Finishing

<b>Standard Length:</b>	2.44mtr of 3mtr/ Custom lengths are available upon request
<b>Complete with:</b>	Joint Plate, bolt and nut, copper link and tapping screws
<b>Others:</b>	Original factory fittings are available upon request



# v•oltecx

All dimensions and material specifications shown are as accurate as possible, Voltecx reserves the right without notice, to make any modifications, specifications, dimension.

Voltecx makes its effort to ensure the information shown in the catalog is as accurate as possible. Voltecx, however cannot guarantee this and accepts no liability for mis-interpretation of this catalog.